

# *Gillespie Corporation* FOUNDED IN 1923

---

34 PINE STREET, P.O. BOX 359  
TEL: 413/967-4980  
WEBSITE: [www.gillespiecorp.com](http://www.gillespiecorp.com)

WARE, MA 01082-0359  
FAX: 413/967-9534  
E-MAIL: [sales@gillespiecorp.com](mailto:sales@gillespiecorp.com)

## **SHALLOW PIT (8" – 12") PASSENGER / FREIGHT ELEVATORS**

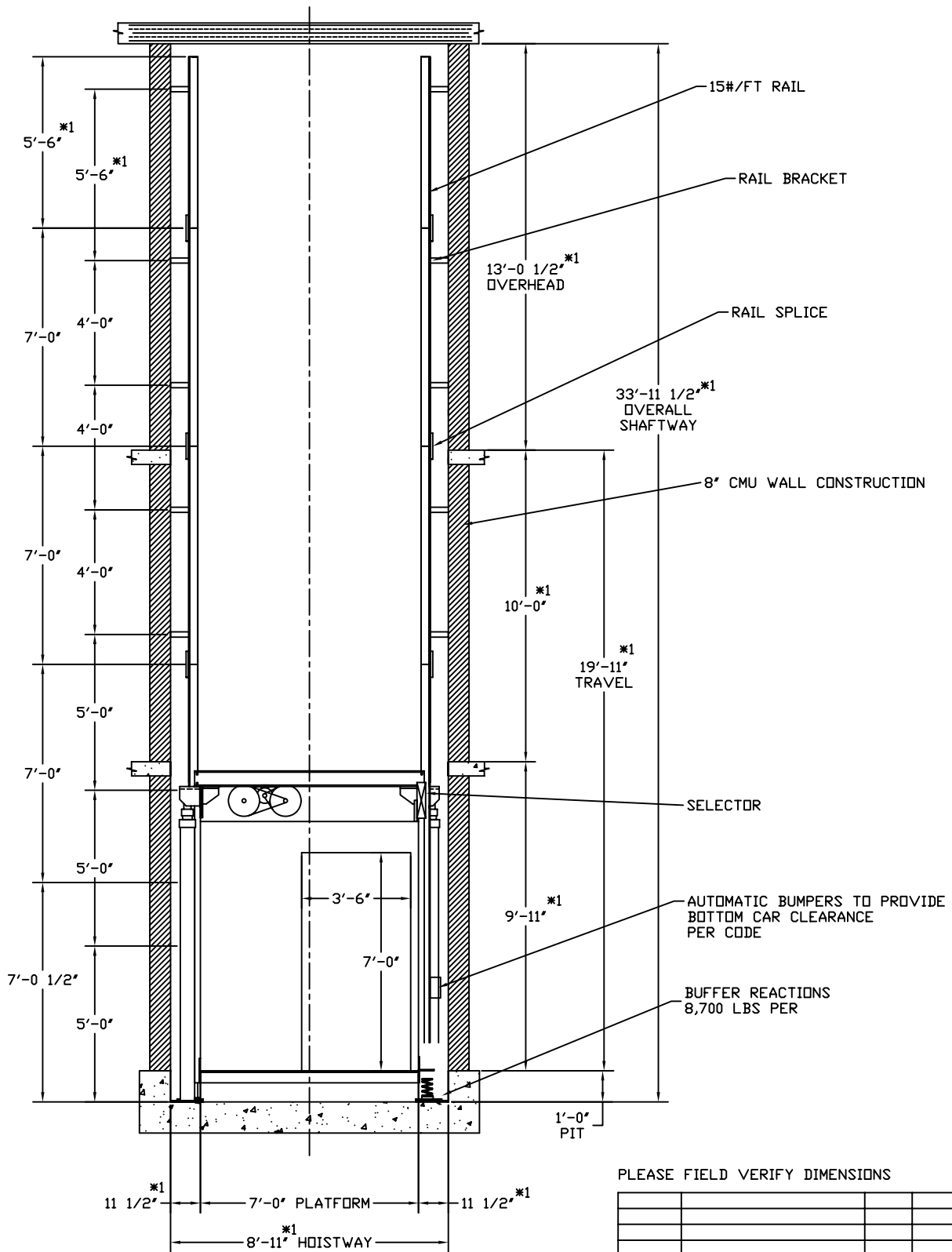
These are fully-functioning elevators – their appearance and functionality are indistinguishable from other passenger or freight elevators. The passenger version is completely ADA compliant.

The Gillespie Shallow Pit Safety System creates the required refuge space beneath the elevator for maintenance and inspection. This secure refuge area results from electrically operated bumper devices that are designed to support the full weight of the elevator. The bumpers are located an ample distance above the actual pit floor to provide the required workspace. A shallow pit elevator requires that a variance be obtained locally.

We can design and manufacture this type of elevator for practically any size or capacity as well as for multiple stops and openings on three sides. The example drawing below is for a standard 2,100# capacity elevator including an example specification. If you would like examples of elevators with different sizes, capacities or number of stops, suitable for hospital gurneys or if you require AutoCAD drawings, please contact us.

Similarly, we can design elevators for limited or restricted overhead situations. With as little as 8' 5" of floor to ceiling distance at the uppermost level, we can supply a fully functioning elevator. If necessary, we can combine the technologies for shallow pit / limited overhead situations.

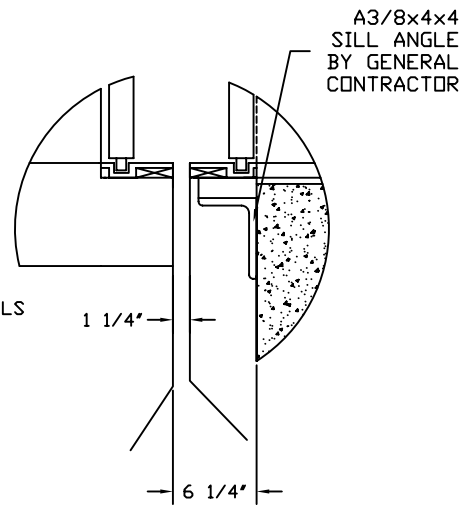
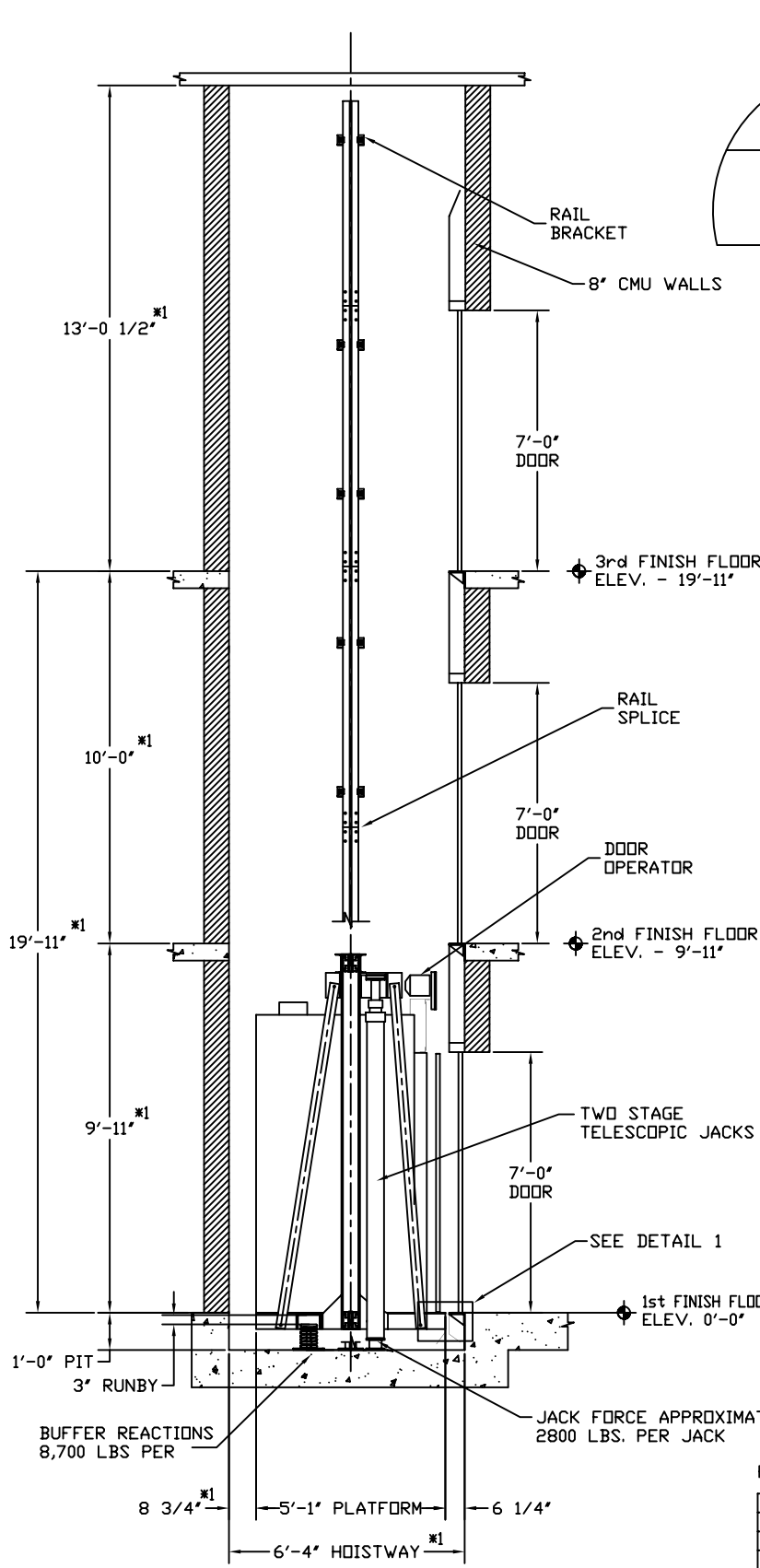
If you have any questions or would like additional information, please feel free to call, e-mail us or visit our website, [www.gillespiecorp.com](http://www.gillespiecorp.com), for additional information.



SECTION A-S3

PLEASE FIELD VERIFY DIMENSIONS

-	EXAMPLE ONLY	-	
DATE	DESCRIPTION	BY	APP'D
REVISIONS			
GILLESPIE CORPORATION			
WARE, MASSACHUSETTS			
JOB NAME -			
FILE NAME -		DRAWN BY JCL	
MODEL - PPH-2-S			
ENGINEER JCL		DATE -	
		CHECK	
JOB NO.	9028	SHEET 1 OF 3	

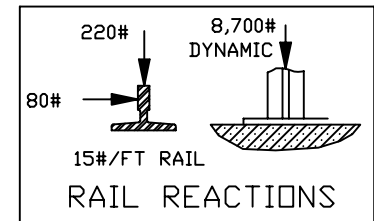
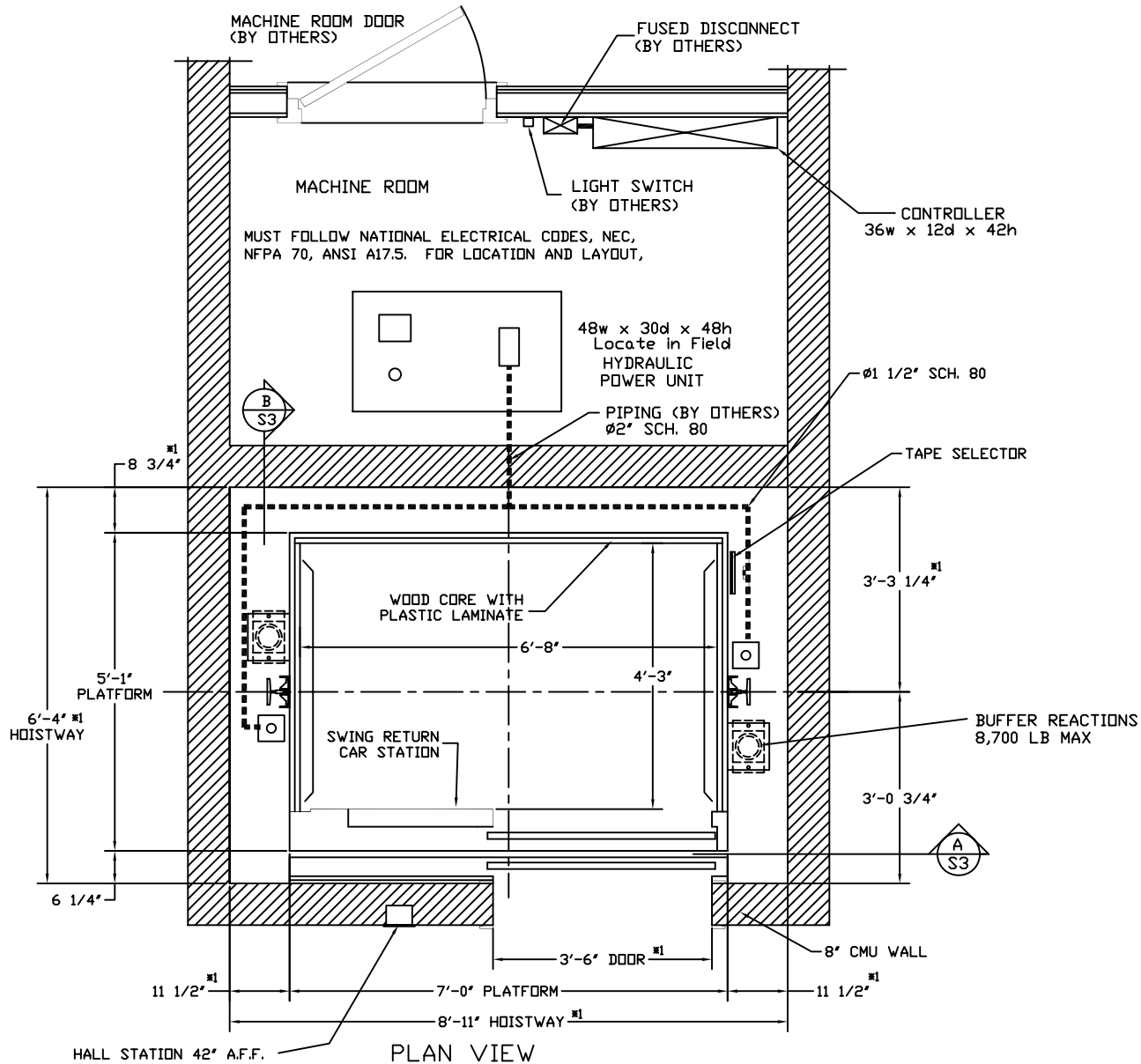


TYPICAL SINGLE SPEED  
SILL DETAIL  
DETAIL 1

SECTION B-S3

PLEASE FIELD VERIFY DIMENSIONS

-	EXAMPLE ONLY	-	
DATE	DESCRIPTION	BY	APP'D
REVISIONS			
GILLESPIE CORPORATION			
WARE, MASSACHUSETTS			
JOB NAME -			
FILE NAME -		DRAWN BY JCL	
MODEL - PPH-2-S			
ENGINEER JCL DATE -		CHECK	
JOB NO.	9028	SHEET 2 OF 3	



PLEASE FIELD VERIFY DIMENSIONS

DATE	DESCRIPTION	BY	APP'D
-	EXAMPLE ONLY	-	-
REVISIONS			
GILLESPIE CORPORATION WARE, MASSACHUSETTS			
JOB NAME -			
FILE NAME -		DRAWN BY JCL	
MODEL - PPH-2-S			
ENGINEER JCL DATE -		CHECK	
JOB NO.	9028	SHEET 3 OF 3	

## **SECTION 14240**

### **SPECIAL SHALLOW PIT PASSENGER ELEVATOR – EXAMPLE SPECIFICATION ONLY**

#### **PART 1 - GENERAL**

##### **1.01 WORK INCLUDED**

- A. Provide directly coupled holeless hydraulic passenger elevator system designed per ANSI/ASME A17.1 Code for Elevators and Escalators for minimal pit condition, complete with hydraulic power unit and cylinders, car frame and platform, cab and doors, door operators, door protection, controller, car and hall fixtures, inspect station, guide rails, rail brackets, pit bumpers, shaftway switches, special pit safety devices to provide for safe refuge space per code, hardware and accessories as required.
- B. Provide hoistway entrances including frames, sills, hangers, tracks, closers, vision panels, and all required hardware.
- C. Review construction documents to assure necessary spaces and materials for legal passenger elevator service are being provided under other sections.
  - 1. Ensure that proper fused disconnect switches, hoistway, pits, and machinery room with access, lighting, and services are being provided under other section.
  - 2. Inform Architect of any discrepancies or omissions prior to final pricing.
  - 3. Work of this Section includes furnishing items necessary for a complete operational passenger elevator system and not provided elsewhere.

##### **1.02 RELATED WORK**

- A. Hoistway construction, if required.
- B. Pit drainage, if required.
- C. Electrical power to Machine Room, including main switch, breaker and lighting.

##### **1.03 QUALITY ASSURANCE**

- A. Passenger Elevator Design Requirements: Provide complete operational holeless hydraulic minimal pit passenger elevator conforming with Contract Documents and applicable codes and standards.
  - 1. Model PPH-2-S Shallow Pit, Gillespie Corporation (Ware, MA).
  - 2. Net Capacity: 2,500 LB.
  - 3. Speed: 50 FPM.
  - 4. Stops: 3 stops front.

5. Travel: 19'-11" total.
6. Platform Size: 7' 0" x 5' 1". Clear car: 6' 8" x 4' 3".
7. Hoistway size: 8' 11" x 6' 4", pit depth 8" – 12" minimum, overhead 10' 9" minimum. (Lower overhead possible.)
8. Hoistway entrances: 2 @ 3' 6" x 6' 8" single-speed side-opening.
9. Operation: Automatic with Phase I and Phase II fire service.
10. Power: 208 volt, 3 phase minimum for TBD hp motor.

#### **1.04 REFERENCES**

- A. ANSI A17.1: Safety Code for Elevators and Escalators.
- B. ANSI C1/NFPA 70: National Electrical Code.
- C. ANSI A17.2: Practice for the Inspection of Elevators, Escalators and Moving Walks.
- D. AWS D1.1: Structural Welding Code.

#### **1.05 SUBMITTALS - Submit the following**

- A. Shop Drawings per Code: Indicate space requirements, general arrangement of equipment, and material being supplied.
- B. Product Data: Submit descriptive brochures, literature, or approved drawings from past jobs of similar design.

#### **1.06 DELIVERY, STORAGE AND HANDLING**

- A. Deliver items and materials to site only after area in which they are to be installed is ready to receive them in their place of final installation.
- B. Store materials in storage area allotted.
- C. Fully protect movable and operating equipment from weather.

#### **1.07 WARRANTY**

- A. Provide coincidental product warranties, where available, for major components of passenger elevator work.

### **PART 2 - PRODUCTS**

#### **2.01 ACCEPTABLE MANUFACTURERS**

- A. Gillespie Corporation (34 Pine Street, Ware, MA 01082; T: 413/967-4980; F: 413/967-9534; E: [sales@gillespiecorp.com](mailto:sales@gillespiecorp.com); W: [www.gillespiecorp.com](http://www.gillespiecorp.com))
- B. Substitutions must be approved by architect and must meet all design requirements.

## **2.02 MATERIALS**

- A. Elevator frame and hardware to be built from structural A36 steel. Electrical controls, switches, and wiring must meet all referenced codes and local and national building code.

## **2.03 FABRICATION**

- A. Passenger elevator: Holeless hydraulic passenger elevator designed to meet or exceed minimum ADAAG handicap accessibility code. Elevator to conform with requirements of ANSI/ASME A17.1. Frame and platform to be constructed of structural A36 steel, with wood flooring for cab mounting and carpeting. Nylon gibbed guide shoes to run on planed steel guide rails.
- B. Hydraulic system: Power unit to be specifically designed for hydraulic elevator service, having submerged pump and motor, steel oil tank, and four solenoid control valve with up and down leveling with soft start and soft stop. Two directly coupled synchronized telescopic hydraulic cylinders to provide for holeless elevator design, mounted alongside rails on either side of platform. Provide pipe rupture valves or hydraulic velocity fuses for safety.
  - 1. HP: Minimum 20 horsepower, minimum voltage 208/3/60.
- C. Cab and Platform: Manufacturer's standard wood core plastic laminate wall panels, with stainless steel door panels, stainless steel return, jamb, and transom. Platform to be finished in ¾" plywood for cab mounting, and finish carpeting. Provide drop ceiling with down lights or aluminum grid frame with lumacite panels and enameled canopy panel with top exit.
- D. Car and hall fixtures to have stainless steel faceplates. Car station to have floor, door open/door close, call cancel, and alarm buttons. Key switches include on/off, light/fan, inspect, access enable, and phase II fire service. Fire indicator and buzzer to be provided. ADAAG emergency phone must be present, as well as an emergency light. Provide a car position indicator and car direction arrows positioned per code. Hall stations must have illuminated call buttons for simplex operation. Provide Phase I fire service key as well as access key for pit safety system at lower landing. Provide position indicator at lower landing. Provide upper landing access key.
- E. Hoistway entrances: Manufacturers standard steel single-speed side-opening 3'-6"x 6'-8" enameled entrance doors and frames. Provide frames, hangers, door panels, guides, interlocks, and all hardware meeting or exceeding hoistway fire rating.
- F. Operating Controller and Shaftway Switches: Manufacturer's standard programmable controller, with tape selector, and terminal slowdown, normal, and final limit switches conforming with referenced codes. Controller to have emergency battery operation, and be designed to work with shallow pit safety system.
- G. Miscellaneous Items: Provide jack pedestals, 15 lb/ft T-rails, rail brackets, jack brackets, bumpers, anchors, and items as required by applicable codes and as required for complete operational system.
- H. Provide complete operational safety system to satisfy code requirements for safe refuge space. Safety system to be fully automatic, operating whenever access is gained to pit space below elevator, either authorized or unauthorized. Provide battery backup system to provide safety system operation during power outages. System to have electrical sensors to detect the presence of persons or things in the pit space.

## **2.04 FINISHES**

- A. Nonexposed-to-view Surfaces:
  - 1. Structural and nonexposed Ferrous Metal Surfaces: Clean surfaces of rust, oil or grease and prime with structural steel primer.
  - 2. Field Welds: Remove oxidation, flux or residue, wire brush clean, apply primer.
- B. Exposed-to-view Surfaces: Clean, degrease metal surface; one coat zinc oxide primer; apply semi-gloss enamel applied in field; color as approved by Architect.

## **PART 3 - EXECUTION**

### **3.01 PREPARATION**

- A. Examine work of other trades on which passenger elevator work depends. Report defects to Architect in writing which may affect elevator work or equipment operation.
- B. Ensure shafts and openings for moving equipment are plumb, level and in line and that pit is to proper depth, waterproofed and drained, with ladder and guards if required.
- C. Ensure machine room is properly illuminated, heated, and ventilated.
- D. Before fabrication, take necessary job site measurements and verify where work is governed by other trades; check measurement of space for equipment and means of access for installation and operation.
  - 1. Obtain dimensions from site for preparation of shop drawings.
- E. Ensure preparatory work has been properly completed to receive elevator work, including such work as:
  - 1. Electrical feeder wires are provided to fused disconnect switch in machine room.
  - 2. Hoistway outlets and power are provided for car light and for light in pit and light and outlets in machine room.
  - 3. Electric power is available for testing and adjusting equipment.
  - 4. Machine room is enclosed and protected from moisture, with lockable door.
- F. Supply in ample time for installation by other trades, inserts, anchors, bearing plates, brackets, supports and bracing, including setting templates and diagrams for placement.

### **3.02 INSTALLATION**

- A. Perform work with mechanics skilled in this work and under direct control and supervision of elevator installer's experienced foreman. Installer to be approved by manufacturer, and have experience in installing holeless hydraulic passenger elevators.
- B. Set hoistway doors in alignment with car opening and true with plumb sill lines.

- C. Install in accordance with manufacturer's instructions, applicable codes, and standards to provide a quiet, smoothly operating installation, free from sidesway, oscillation or vibration.
- D. Mount machine in accordance with approved shop drawings; isolate and dampen machine vibration with properly sized sound-reducing anti-vibration rubber pads.
- E. Grout sills and door frames or mount in drywall per manufacturers instructions.
- F. Locate and mount hall stations per manufacturers instructions.
- G. Supply all equipment necessary for installation not provided by elevator manufacturer; including hoistway wiring and conduit, rail bracket wall anchors or inserts, hydraulic piping, hydraulic oil, and finish painting. Some work, such as finish painting and casting of inserts should be done by contractor or subcontractor.

### **3.03 INSPECTION**

- A. Obtain necessary inspections and permits and make such tests as are required by regulations and authorities.
- B. Final inspection shall be after elevator installation, hoisting enclosure and machine room are complete.
- C. Inspect installation in accordance with ANSI A17.2.
- D. Deliver test certificates and permits to Architect.

### **END OF SECTION**